

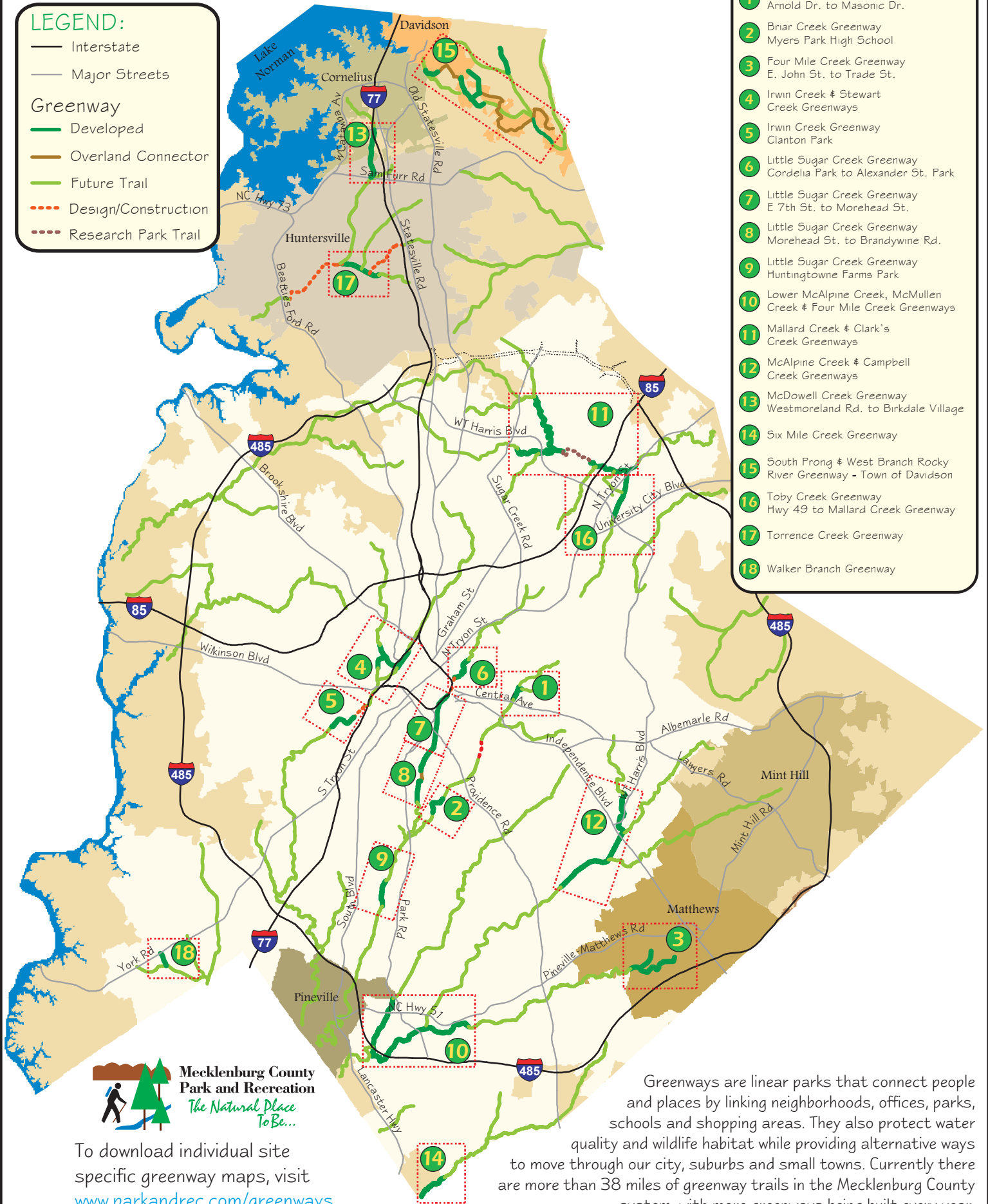
Mecklenburg County Greenways

LEGEND:

- Interstate
- Major Streets
- Greenway**
- Developed
- Overland Connector
- Future Trail
- - - Design/Construction
- - - Research Park Trail

GREENWAYS:

- 1 Briar Creek Greenway
Arnold Dr. to Masonic Dr.
- 2 Briar Creek Greenway
Myers Park High School
- 3 Four Mile Creek Greenway
E. John St. to Trade St.
- 4 Irwin Creek & Stewart
Creek Greenways
- 5 Irwin Creek Greenway
Clanton Park
- 6 Little Sugar Creek Greenway
Cordelia Park to Alexander St. Park
- 7 Little Sugar Creek Greenway
E. 7th St. to Morehead St.
- 8 Little Sugar Creek Greenway
Morehead St. to Brandywine Rd.
- 9 Little Sugar Creek Greenway
Huntingtowne Farms Park
- 10 Lower McAlpine Creek, McMullen
Creek & Four Mile Creek Greenways
- 11 Mallard Creek & Clark's
Creek Greenways
- 12 McAlpine Creek & Campbell
Creek Greenways
- 13 McDowell Creek Greenway
Westmoreland Rd. to Birkdale Village
- 14 Six Mile Creek Greenway
- 15 South Prong & West Branch Rocky
River Greenway - Town of Davidson
- 16 Toby Creek Greenway
Hwy 49 to Mallard Creek Greenway
- 17 Torrence Creek Greenway
- 18 Walker Branch Greenway



**Mecklenburg County
Park and Recreation**
*The Natural Place
To Be...*

To download individual site
specific greenway maps, visit
www.parkandrec.com/greenways

Greenways are linear parks that connect people and places by linking neighborhoods, offices, parks, schools and shopping areas. They also protect water quality and wildlife habitat while providing alternative ways to move through our city, suburbs and small towns. Currently there are more than 38 miles of greenway trails in the Mecklenburg County system, with more greenways being built every year.