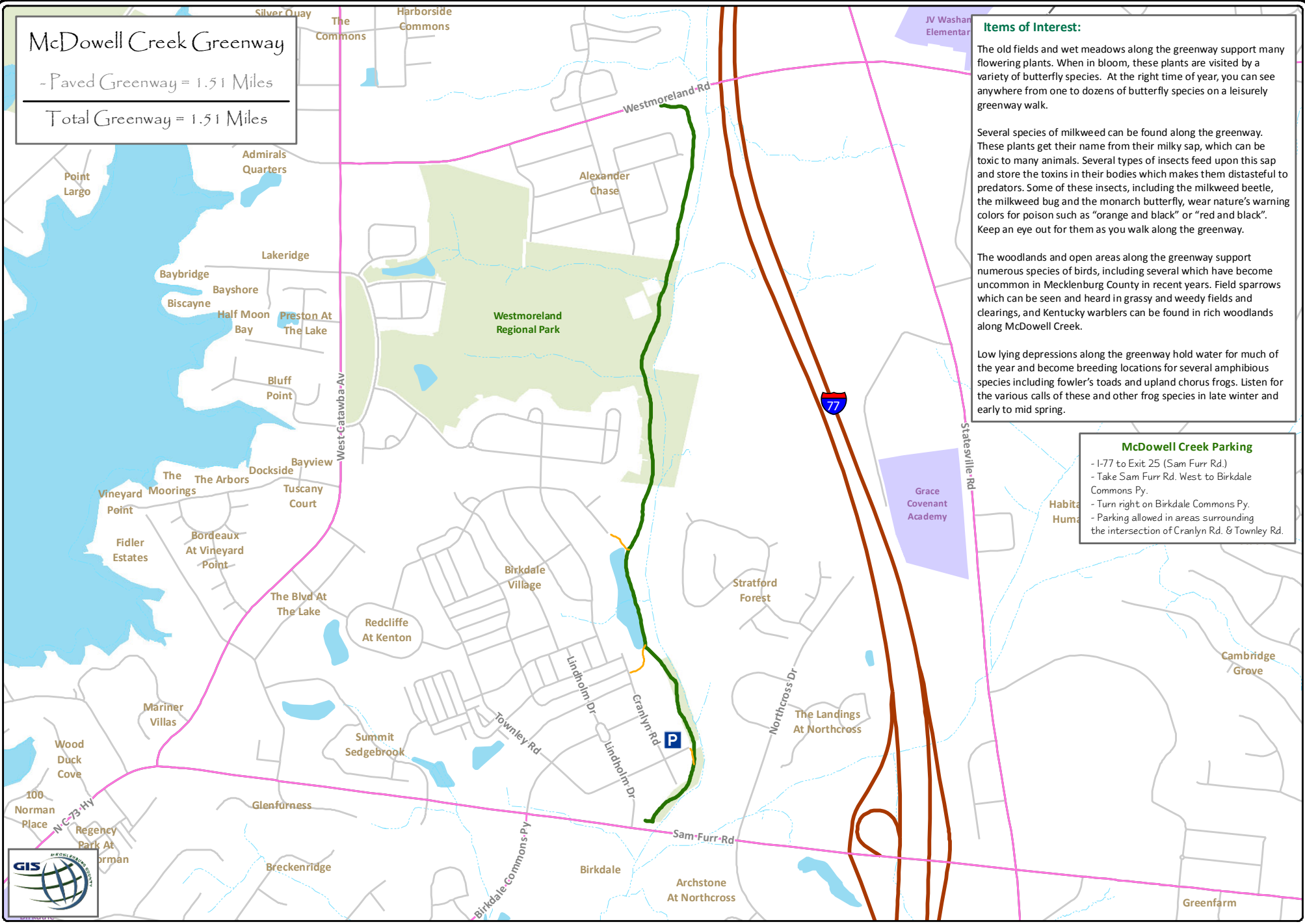


McDowell Creek Greenway

- Paved Greenway = 1.51 Miles

Total Greenway = 1.51 Miles



Items of Interest:

The old fields and wet meadows along the greenway support many flowering plants. When in bloom, these plants are visited by a variety of butterfly species. At the right time of year, you can see anywhere from one to dozens of butterfly species on a leisurely greenway walk.

Several species of milkweed can be found along the greenway. These plants get their name from their milky sap, which can be toxic to many animals. Several types of insects feed upon this sap and store the toxins in their bodies which makes them distasteful to predators. Some of these insects, including the milkweed beetle, the milkweed bug and the monarch butterfly, wear nature's warning colors for poison such as "orange and black" or "red and black". Keep an eye out for them as you walk along the greenway.

The woodlands and open areas along the greenway support numerous species of birds, including several which have become uncommon in Mecklenburg County in recent years. Field sparrows which can be seen and heard in grassy and weedy fields and clearings, and Kentucky warblers can be found in rich woodlands along McDowell Creek.

Low lying depressions along the greenway hold water for much of the year and become breeding locations for several amphibious species including fowler's toads and upland chorus frogs. Listen for the various calls of these and other frog species in late winter and early to mid spring.

McDowell Creek Parking

- I-77 to Exit 25 (Sam Furr Rd.)
- Take Sam Furr Rd. West to Birkdale Commons Py.
- Turn right on Birkdale Commons Py.
- Parking allowed in areas surrounding the intersection of Cranlyn Rd. & Townley Rd.



Legend:

- Greenway Mile Markers
- Greenway
- Existing Bike Lanes
- Major Road
- Creeks/Streams
- School/College
- Greenway Entrance
- Interstate
- Local Street
- Lakes/Ponds
- Park Property